

AC62-2

product group: **Advanced Contractor's Series**
system type: **Horn-Loaded 12" Mid + 2" HFD**



construction

The AC62-2 is a horn loaded, high Q, 2-way high/mid system in a computer optimized enclosure. Loudspeaker complement consists of single proprietary midrange 12" and a single Unified Titanium Diaphragm™ 2" compression driver. Waveguides utilize McCauley ClearFiber™ biaxially-stitched horn manufacturing technology. The enclosure is constructed of durable 12-ply void-free birch laminate, dadoed for strength and durability. Integrated eyebolt suspension points facilitate permanent installation. Perforated steel is employed for frontal protection of the loudspeaker complement.

Features:

Integrated Eyebolt Suspension
McCauley Premium Class Componentry
12 ply Dadoed Construction
Durable ProCoat™ Elastomeric Finish



the idea behind it

The AC62-2 was designed as a dedicated high/mid system for permanent installations that require superior coverage and control over long distances. Its extraordinary acoustic quality is a direct result of the implementation of McCauley's proprietary UTD™ technology, landing this system our highest performance rating. This system integrates with other McCauley AC™ products, offering consistent coverage and a uniform appearance.

Applications:

Stadiums & Arenas
Large Format Installation



Trapezoidal

Flyware

performance parameters

power handling	450w RMS
frequency response	100Hz - 15kHz
nominal impedance	
Mid	8Ω
High	16Ω
sensitivity	
Mid	106db
High	115db
maximum output SPL	
Continuous	132db
Peak	138db
recommended crossover	80Hz / 1.2kHz
directivity/coverage	45°x40° (HxV)

physical properties

weight	165lbs / 75kgs
dimensions	
inches	32.9H x 21W x 39.5D
centimeters	79H x 53W x 76D
finish	ProCoat™
enclosure material	5/8" 12-ply Finland Birch
construction	rabbet & dadoed
suspension	integrated eyebolt
connectors	binding posts
transducers	(1) 12" Midrange (1) UTD™ HF Driver
recommended subwoofer	AC588, AC288

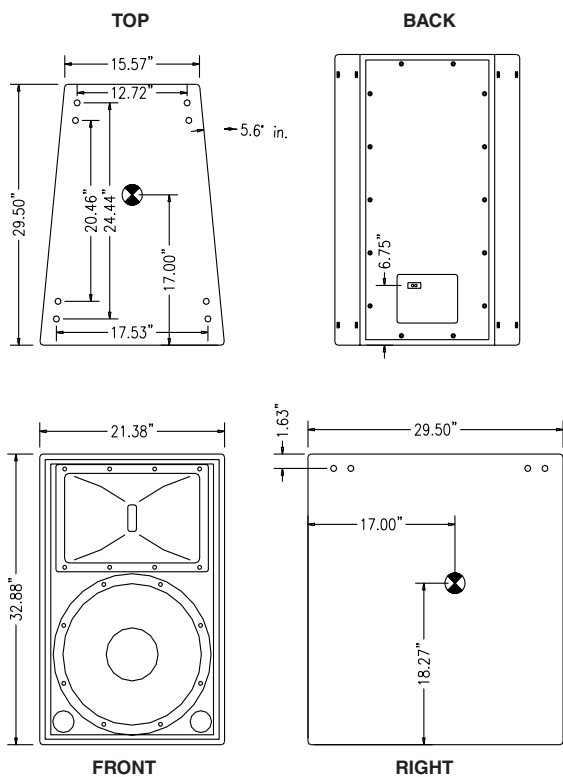
technical specifications

AC62-2

2-WAY MID/HIGH CONTRACTOR

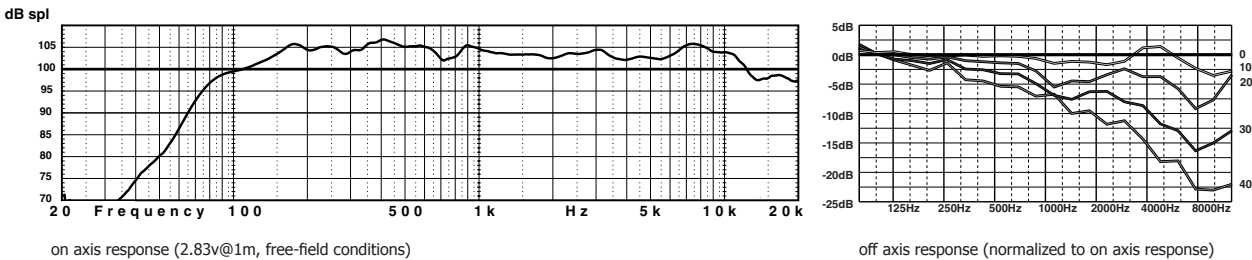
dimensional illustrations

architectural specifications



The loudspeaker shall be a two-way horn loaded "Long Throw" type. It shall comprise one low/mid ClearFiber™ horn section utilizing a 12" transducer and one high frequency ClearFiber™ horn flare utilizing a 2" throat compression driver. The 12" low/mid transducer shall incorporate low distortion carbon fiber cone technology and the "Focused Field" removable magnet structure design. They shall have a power capacity of 350 watts RMS and 600 watts peak and a sensitivity of 106 dB measured at 1 meter with 2.83 volts into a nominal 8 ohm load. The high frequency driver shall incorporate "Unified Titanium Diaphragm" technology with a power handling capacity of 150 watts RMS above 1.5kHz and a sensitivity of 115 dB measured at 1 meter with 2.83 volts into a nominal 16 ohm load. The combined loudspeaker system shall be capable of 132 dB SPL continuous and 138 dB SPL peak maximum output. The loudspeaker system shall have an effective operating range of 100 Hz to 15 kHz +/- 3 dB (70Hz to 22 kHz - 10 dB). The loudspeaker shall offer nominal coverage angles of 45° horizontal, and 40° vertical. The AC52-2 shall weigh a total of 150 lbs. and shall measure 33 inches tall, 21.4 inches wide (15.2 inches at rear), 29.5 inches deep with a trapezoidal shape and the sides shall be angled at 5.6° from front to back. The AC62-2 enclosure shall be constructed of 12-ply birch hardwood and shall have a weather and wear resistant ProCoat™ elastomeric finish. Electrical connections shall be made via standard binding posts or barrier strips. The loudspeaker shall be the McCauley AC62-2.

response data



polar data

Outer ring is +6dB, each ring represents an additional -6dB down.
For vertical plots, 90° represents the top of an enclosure, 270° is the bottom.

